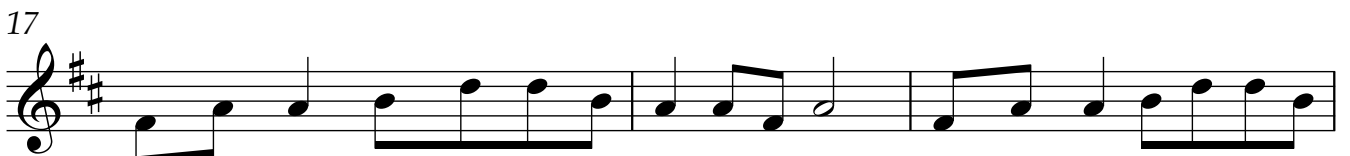
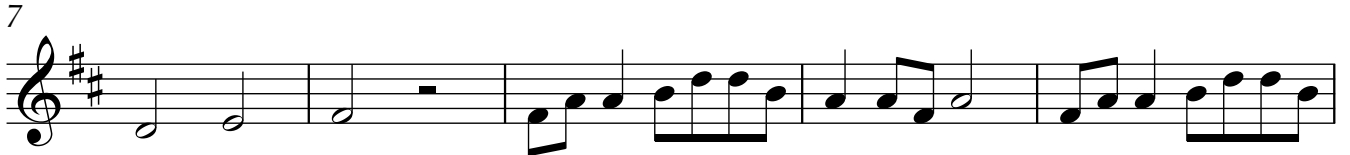


Körsbärsblomman

Violin 1

Trad.

♩ = 60



Som-mar-vind ström-mar gen-om trä - dens hus. Som-mar-doft fyl-ler var-je



blom-mas ljus. Ljus är blom-man på gre - nen Mo-no no a wa - re.

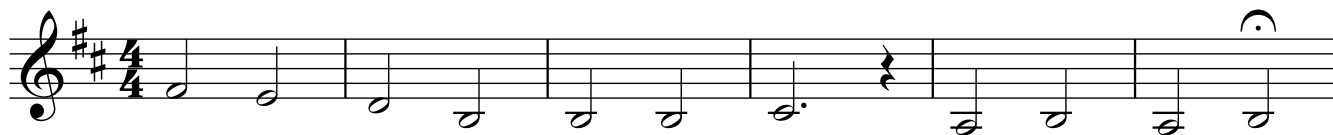


Körsbärsblomman

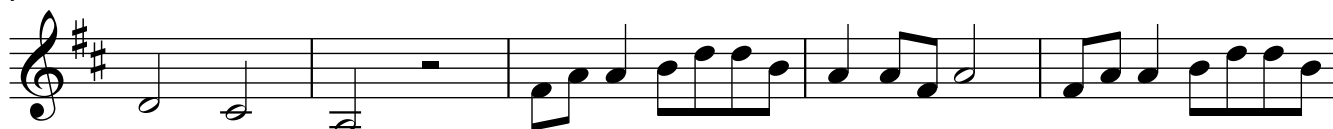
Violin 2

Trad.

♩ = 60



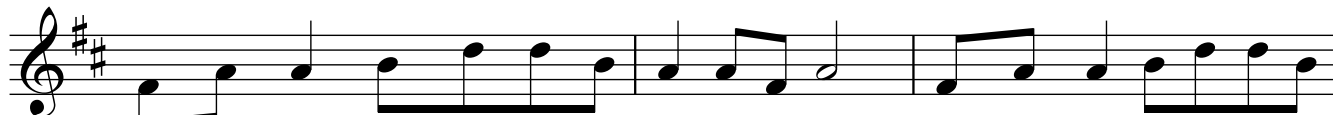
7



12



17



Som-mar-vind ström-mar gen-om trä - dens hus. Som-mar-doft fyl-ler var-je

20

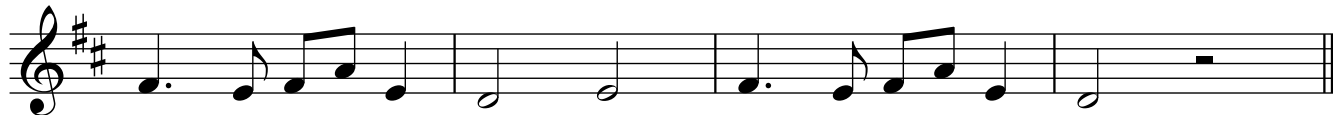


blom-mas ljus. Ljus är blom-man på gre - nen Mo - no no a wa - re.

25



29



Körsbärsblomman

Viola

Trad.

♩ = 60



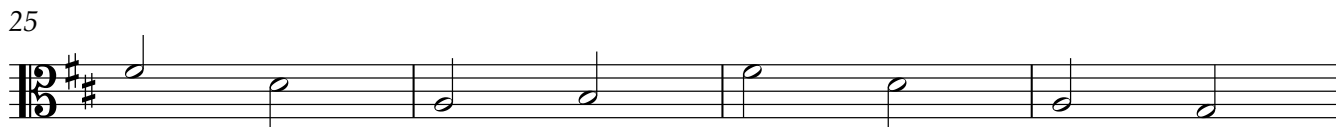
Som-mar-vind ström-mar gen-om



trä - dens_ hus. Som-mar-doft fyl - ler var - je blom - mas_ ljus.



Ljus är blom-man på gre - nen Mo - no no a wa - re.



Violoncello 1

Körsbärsblomman

Trad.

♩ = 60



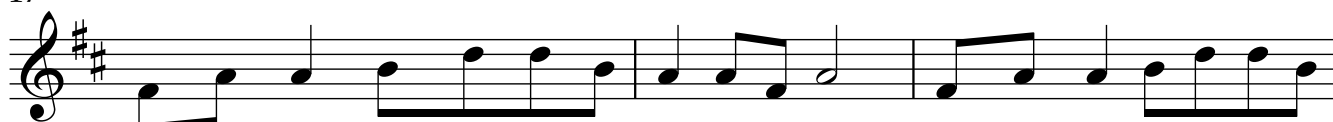
7



12



17



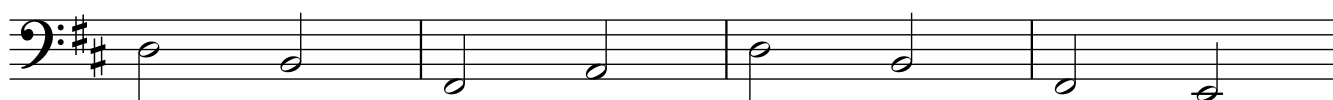
Som-mar-vind ström-mar gen-om trä - dens hus. Som-mar-doft fyl-ler var-je

20

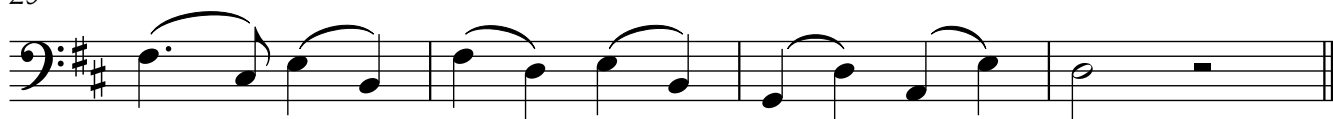


blom-mas ljus. Ljus är blom-man på gre - nen Mo-no no a wa - re.

25



29



Violoncello 2

Körsbärsblomman

Trad.

♩ = 60



Som-mar-vind ström-mar gen-om trä - dens hus. Som-mar-doft fyl-ler var-je



blom-mas ljus. Ljus är blom-man på gre - nen Mo-no no a wa - re.

