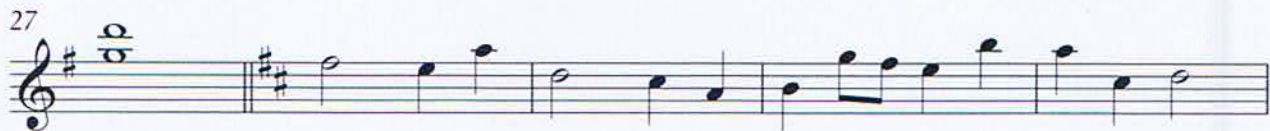


Hogwarts' Hymn

Violin 1

♩=70



Hogwarts' Hymn

Violin 2

$\text{♩} = 70$



Hogwarts' Hymn

Viola

♩=70

1

f

8

15

21

28

34

40

Violoncello

Hogwarts' Hymn

♩=70

7

f

14

20

ff

24

28

34

ff

40

43

ff

Double Bass

Hogwarts' Hymn

♩=70

7

f

14

20

ff

24

28

34

ff

40

43

ff